



**Water pH
stabilizer unit**



- **We will make the device according to your need.**
- **Removal of bicarbonate from water and maintaining desired pH level.**
- **Stand alone unit with built in process computer, circulation and delivery pumps.**
- **Works with Nitric acid maximum 30% of weight.**
- **Automatic switching from incoming water to recirculation water.**
- **Unit is designed for pre-pH control of the fertilizer dosing unit.**
- **Unit helps to minimize clogging of irrigation systems.**
- **Less precipitation in the substrate.**
- **Better plant growth and root environment.**
- **Acid dosing and maximized aeration in one system.**

Calcium

New leaves misshaped or stunted.
Existing leaves remain green.

Iron

Young leaves are yellow and white with green veins.
Mature leaves are normal.

Nitrogen

Upper leaves are light green where
lower leaves are yellow. Bottom or older
leaves are yellow and shrivelled.

New growth Old growth

Potassium

Yellowing at the tips and edges, usually in younger leaves.
Dead or yellow patches develop on leaves.

Carbon dioxide

White deposits on leaves. Stunted
growth, and the plant dies back.

Manganese

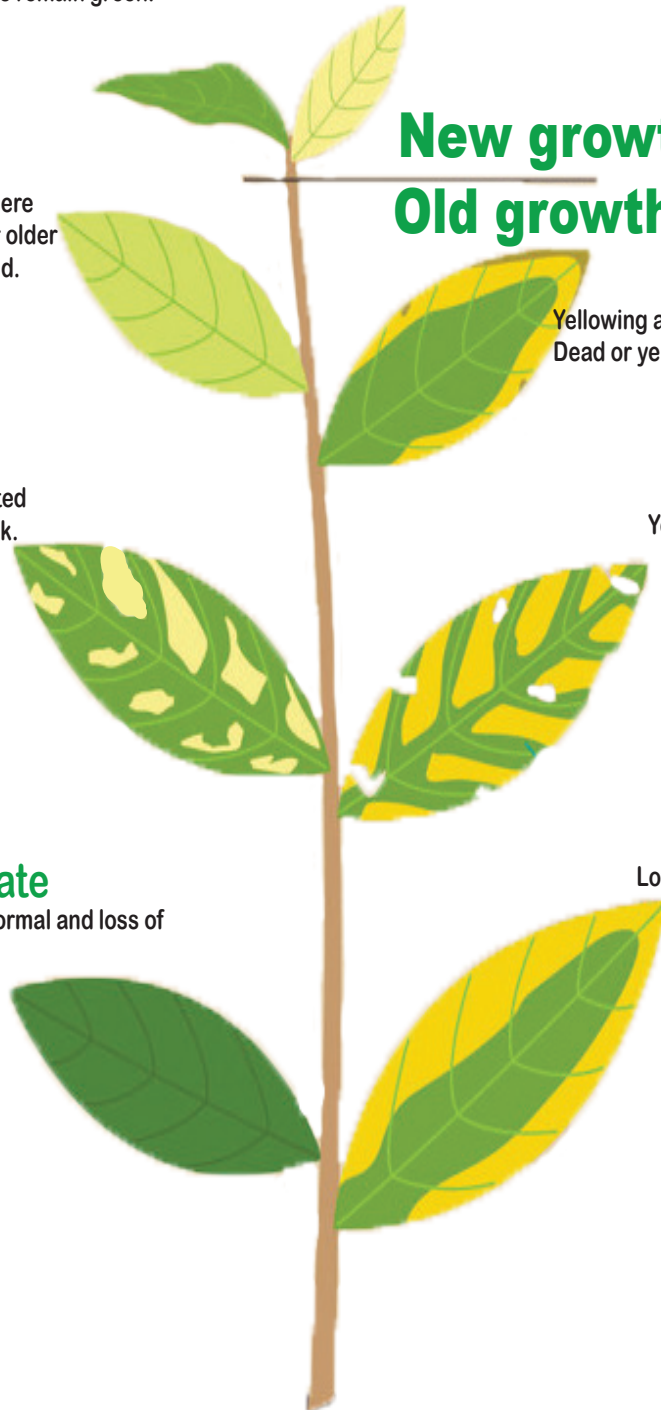
Yellow spots and elongated holes
between veins.

Phosphate

Leaves are darker than normal and loss of
leaves.

Magnesium

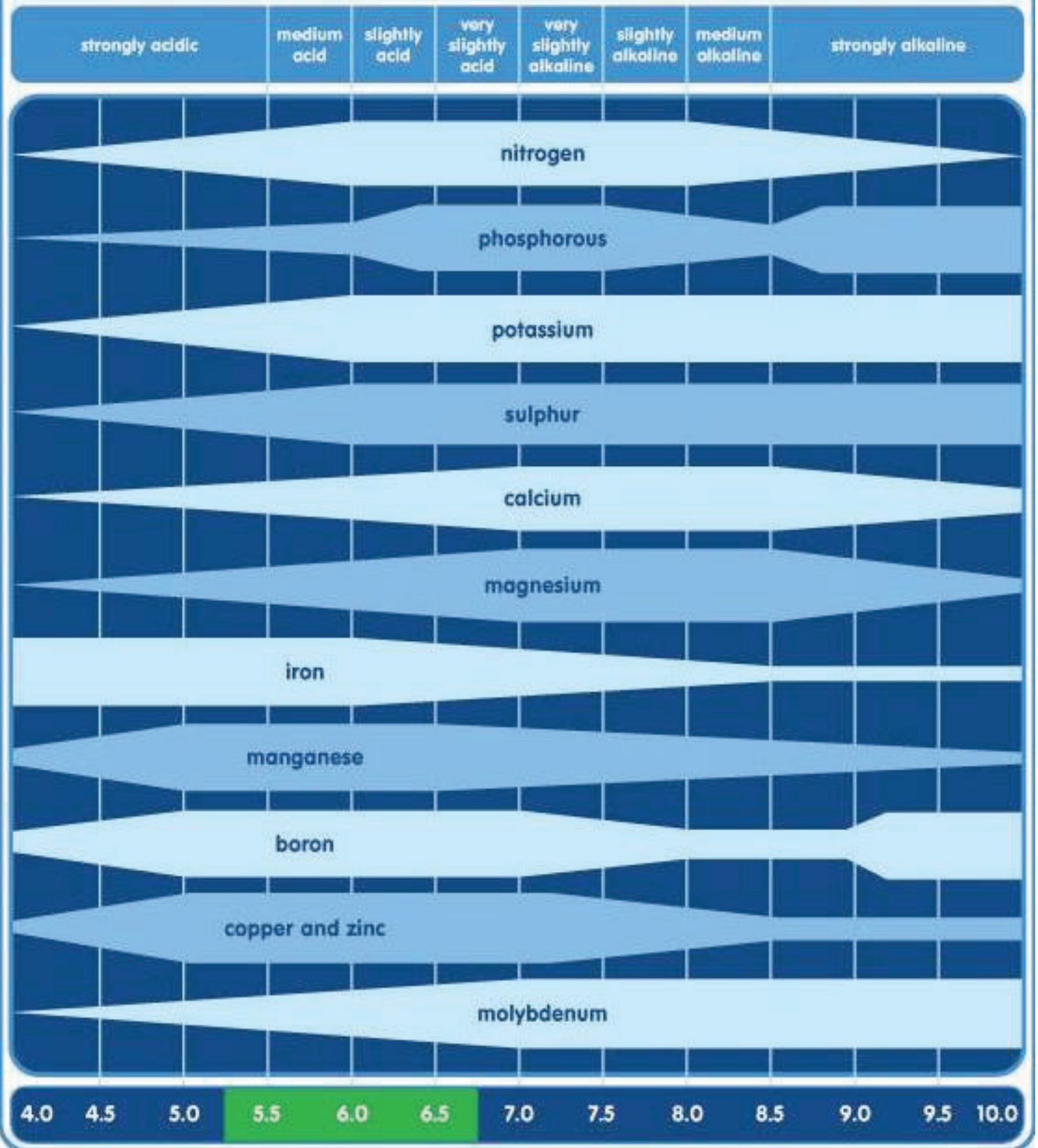
Lower leaves turn yellow from outside going
in, veins remain green.

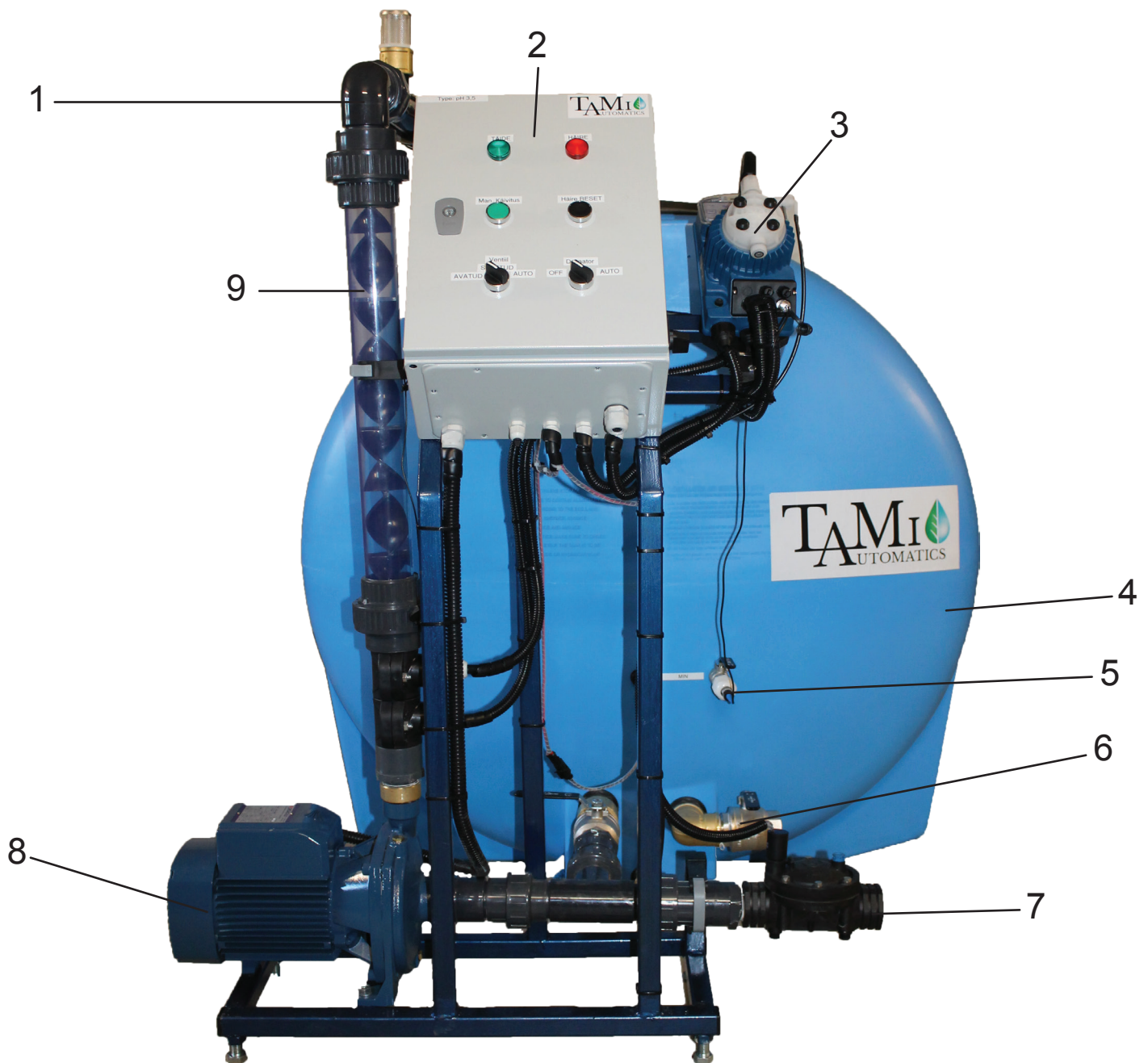


Plant deficiency guide

How nutrient pH affects availability of plant nutrients

the width of the bands indicates the relative availability of each plant and food element at various pH levels





1. Aeration venturi
2. Panel LED indicator lights for water-, acid controller alarms and water inlet indication and control modules
3. Acid dosing pump
4. Tank *
5. pH probe
6. Water outlet **
7. Automatic inlet untreated water solenoid valve
8. Circulation pump
9. Water mixing unit for proper acid/air/water mixing.

* Tank size depends water consumption

** We are offering processed water outlet pump